



PIONEER- IDH 5500 PLUS series

- | | |
|-------------|------------------|
| G20N | DUAL G20N |
| G20R15 | DUAL G20R15 |
| G20F50 | DUAL G20F50 |
| G20N-ST50 | DUAL G20N-ST50 |
| G20R15-ST50 | DUAL G20R15-ST50 |
| G20F50-ST50 | DUAL G20F50-ST50 |



INDEX

- G20= GMP Stream Feeder20
- R15= Rotary Knife15
- F50= Flying Knife 50
- N= Nicking Knife
- ST= Auto Stacker



Electric induction heating roller system
 Precise temperature control ($\pm 1^{\circ}\text{C}$)
 Quick warm-up time
 Long life

Quality high speed laminator for digital printing on-demand

- Heavy duty induction heating roller for high speed lamination lamination(40m/min) and for accurate temperature control ($\pm 1^{\circ}\text{C}$)
- High speed stream feeder (6,000sheet/hr)
- Film slitting knife and rewinder
- Film rewinder for fusing
- Nicking knife for perfect cutting(standard)
- Selective cutting condition (Rotary or nicking knife)
- High pressure at laminating roller with pneumatic cylinder for quality lamination
- Accurate temperature control with roller surface temp. sensor
- Perfect bursting with pneumatic cylinder



Auto Stacker (Optional)



Jogging Table (Optional)

COMMERCIAL LAMINATING MACHINERY



PIONEER-IDH 5500 PLUS Series

www.gmp.com

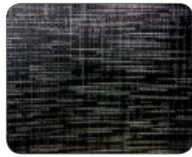
Commercial Laminating Machinery

Basic patterns of embossing rollers

Various embossing effect for high valued added products



▲ Linen texture



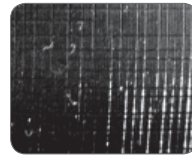
▲ Fine texture



▲ Leather texture



▲ Sparkler texture



▲ Silky texture



▲ Photo texture

Features

- Environment-friendly "Thermalami" system
- Perfect lamination for whole kinds of Substrates without bubble.
- Easy to convert for embossing lamination mode
 - 6 Patterns of embossing rollers
- Space effective design
- Equipped the roller cooling system for perfect embossing effect
- Film tension adjustment device and decurling device are equipped

Specifications

Model Name	PIONEER-IDH 5500 PLUS
Dimensions(WxLxH,mm)	1,160x3,650x1,340 mm
Max. Laminating Speed	40m/min
Max. Feeding Speed	6,000 sheet/hr
Max. Sheet Format	550(W) x 700(L)mm
Min. Sheet Format	210(W) x 250(L)mm
Laminating Film	POLYNEX, NYLONEX, PERFEX
Substrate Thickness	120~400 g/m ²
Feeder Loading Height	480mm
Front Roller	T: 214mm / B: 200mm
Rear Roller	80mm
Power Requirements	AC 380~400V, 3N, 50/60Hz
Power Consumption	13 kw
Warm up Time	10min
Heating System	Induction Heating System
Max. Laminating Temperature	140°C
Temperature Control	PID Control
Operating System	PLC (Programmable Logic Controller)
Main Driving	1.0kw Induction Motor with Servo Driver
Feeder Driving	0.4kw Servo Motor with Servo Driver
Nip Pressure	Pneumatic Cylinder
Film Core	Air Shaft (3")
Cooling System	Air cooling with Blower
Feeding	GMP Syncro Stream Feeder
Cutting	Burst Cutting with Nicking Knife and Perforator
Weight	1,100kg
Option	Embossing Roller, Water Heating System, MICRONEX Winder, Silicon Nip Roller



Nicking Knife



Air Shaft



Touch Screen



Stream Feeder

※ GMP reserves the right to change specifications without prior notice.