



PIONEER- IDH 8000 PLUS DUAL series

G30N
G30R20
H74R20



INDEX

G30= GMP Stream Feeder 30
N= Nicking Knife
R20= Rotary Knife 20
H74= Heidelberg Feeder 74



Electric induction heating roller system
Precise temperature control ($\pm 1^{\circ}\text{C}$)
Quick warm-up time
Long life

Single side Laminator with a Laminating speed of 70m/min,
Automatic feeding, Nicking, Slitting, Rewinder
Automatic Burster, Jogging Table(Optional), Embossing rollers (Option)

Laminating for digital printing
on-demand bookbinding & off-set print

- Available lamination with or without embossing
- Perfect embossing effects during high speed lamination
- Overlay embossing possible with one time job
- Suitable for massive operation (Laminating speed : Max. 70m/min)
- All electronic functions are controlled by a LS PLC, Servo motor and driver
- After lamination, the laminated paper is stacked automatically

COMMERCIAL
LAMINATING MACHINERY



Commercial Laminating Machinery

Laminating for Diverse Surface Finish or Coated Paper

Max. Laminating speed : 70m/min

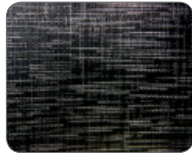
Feeding speed : 7,500sheet/hr

Basic patterns of embossing rollers

Various embossing effect for high valued added products



▲ Linen texture



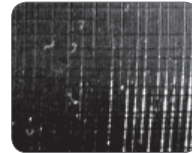
▲ Fine texture



▲ Leather texture



▲ Sparkler texture



▲ Silky texture



▲ Photo texture

Automatic Stacking Table

A Stacking and palletized accessory for perfect alignment of finished output eliminates the need for hand jogging and pallet loading

- Model : Automatic Stacking Table-8000
- Out-put Height : 750mm
- Paper Size(MAX) : 800x1,100mm
- Dimensions(WxLxH) : 1,420 x 1,250 x 1,230mm
- Power Requirements : AC 220-240V, 50-60Hz



Specifications

Model Name	PIONEER II-IDH 8000 PLUS DUAL		
Laminator Dimensions(WxLxH)	1,540x3,880 x 1,517mm	Heating System	Induction Heating System
Stacker Dimensions(WxLxH)	1,420x1,250x1,230mm	Temperature Control	PID Control
Jogging Table Dimensions(WxLxH)	-	Max. Operating Temperature	140°C
Laminator Weight	2,500kg	Operating System	LS PLC (Programmable Logic Controller)
Max. Laminating Speed	70m/min	Main Motor	LS 5kw Servo Motor with Servo Driver
Max. Feeding Speed	7,500 sheet/hr	Feeder Motor	LS 0.4kw Servo Motor with Servo Driver
Max. Sheet Format	800(W) x 1,100(L)mm	Burster Motor	LS 0.43kw Induction Motor with Vector Driver
Min. Sheet Format	210(W) x 250(L)mm	Rewinder Motor	Induction Motor with LS Driver
Substrate Thickness	120 ~ 400 g/m ²	Vacuum Pump	Becker-T4.40
Feeder Loading Height	750mm	Nip Pressure	Pneumatic Cylinder
Out-put Stacker Height	750mm	Film Core	Air Shaft (3")
Laminating Films	POLYNEX, NYLONEX, PERFEX, MICROCRYSTAL	Cooling System	Air Cooing with Blower
Front Roller Diameter	T: 214mm / B: 200mm	Feeding	GMP Syncro Stream Feeder
Rear Roller Diameter	100mm	Cutting	Burst Cutting with Nicking Knife and Perforator
Power Requirements	AC 380~400V, 3N, 50~60Hz	Laminating Roller	Mirror Roller, Embossing Roller (1EA)
Power Consumption	45kw	Option	Embossing Roller, MICRONEX Winder, Silicon Nip Roller
Warm up Time	15min		

※ GMP reserves the right to change specifications without prior notice.