

# PROTOPIC-740 740 DUAL PROTOPIC AUTO-740 AUTO-740 DUAL

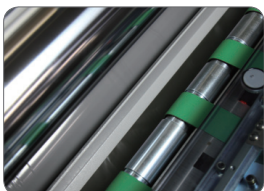


#### Applied Patents for PROTOPIC-740 series

- ▶ Laminator with paper device
- ▶ The method to form embossing pattern
- ▶ Film roll holder for laminators
- ▶ Laminator equipped with embossing roller

## Key features of PROTOPIC-740 series

- Designed for B2 size digital prints
- Automatic paper-feeding system (AUTO)
- Automatic gap adjustment for feeding paper & Automatic burst-cutting system
- Slide type paper plate – easy to feed the papers
- Air compressor (with light weight & lower noise) also can be placed in the lami-table with films and consumables
- Strengthened laminating pressure for more stepped-up bonding power effecting perfect output quality
- Ergonomic touch screen for enhancing operator-centric convenient control & quality output productivity
- Air Cooling system with an air compressor for perfect Photo matting effect – for DUAL PHOTO version



High glossy chrome roller



Automatic feeding gap adjustable device



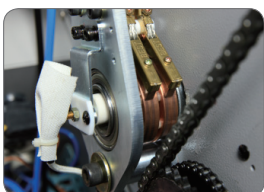
Film perforator



In-line perforator



Cantilever type film shaft



Roller temperature sensor



Touch panel



Decurling device



Air cooling system



Air Compressor / Vacuum Pump

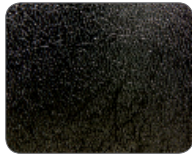
# PROTOPIC- 740 series

www.gmp.com

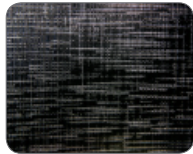
## POD Roll Laminator

### Basic patterns of embossing rollers

Easy conversion to embossing lamination mode - 6 types of embossing rollers



▲ Photo Texture



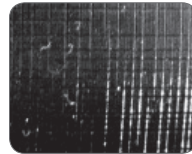
▲ Fine Texture



▲ Leather Texture



▲ Sparkler Texture



▲ Silky Texture



▲ Linen Texture

### Application

- Poster, pop sign, menu
- Book cover
- Photo album & inner papers
- Photo-embossing lamination
- Name card
- Gift certificate
- Label
- New year's card / book
- Silver halide replacement system
- Digital media whole page sleeking - gloss, matt, hologram
- Digital media spot sleeking - gloss, hologram, metallic



### Specification

Model Name	PROTOPIC-740	PROTOPIC-740 DUAL	PROTOPIC AUTO-740
Dimension (W*L*H, mm)	1020*2080*670mm	1020*2270*670mm	1020*2365*670mm
Max. Laminating Speed	15min	15min	15min
Max. Paper Size (W*L, mm)	740*1200mm	740*1200mm	740*1200mm
Paper pile height	350mm	350mm	350mm
Laminating Films	Single Side: POLYNEX, PERFEX, NYLONEX FILM Sleeking: Gloss, Matt, Hologram, Metallic Foil	Single Side: POLYNEX, PERFEX, NYLONEX FILM Sleeking: Gloss, Matt, Hologram, Metallic Foil	Single Side: POLYNEX, PERFEX, NYLONEX FILM Sleeking: Gloss, Matt, Hologram, Metallic Foil
Substrate Thickness	120~350g/m <sup>2</sup>	120~350g/m <sup>2</sup>	120~350g/m <sup>2</sup>
Front roller diameter	T: 100 / B: 80	T: 100 / B: 80	T: 100 / B: 80
Rear roller diameter	55	55	55
Power requirement	AC 220~240V/15A	AC 220~240V/15A	AC 220~240V/15A
Power consumption	3.45kw	3.45kw	3.45kw
Warm-up time	7min	7min	7min
Heating system	INFRARED HEATER	INFRARED HEATER	INFRARED HEATER
Laminating temp.	MAX.150℃	MAX.150℃	MAX.150℃
Temp. Control	Touch-screen	Touch-screen	Touch-screen
Speed control	Touch-screen	Touch-screen	Touch-screen
Display system	LCD Panel	LCD Panel	LCD Panel
Roller pressure	Pneumatic cylinder	Pneumatic Cylinder	Pneumatic Cylinder
Film core size	77mm (3" ) / Dual	77mm (3" ) / Dual	77mm (3" ) / Dual
Air compressor	2HP, 19 L/min	2HP, 19 L/min	2HP, 19 L/min, 2units
Vacuum pump	-	-	250w 120 L/min
Temp. Sensing method	Internal sensor	Internal sensor	Internal sensor
Cooling device	Air blower	Air blower	Air cooling system

※ GMP reserves the right to change specifications without prior notice.